



Double Ended Shear Beam Load Cell

# VLC-A102

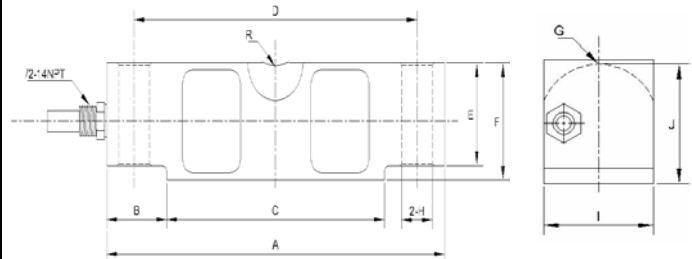
**APPLICATIONS**

Truck scale, Tank, bin,  
Silo Batching, blending  
and mixing system

| STANDARD CAPACITY     |  |
|-----------------------|--|
| 10K, 25K, 40K, 50K    |  |
| 75K, 125K 150K 200Klb |  |

| WIRING |            |
|--------|------------|
| RED    | Input (+)  |
| BLACK  | Input (-)  |
| GREEN  | Output (+) |
| WHITE  | Output (-) |

| SPECIFICATIONS           |                  |
|--------------------------|------------------|
| Rated Output             | 3mV/V ± 0.25%    |
| Non-Linearity            | 0.03% F.S.       |
| Hysteresis               | 0.03% F.S.       |
| Non-repeatability        | 0.02% F.S.       |
| Creep (in 1 hr)          | 0.03% F.S.       |
| Zero Balance             | ± 1%             |
| Temp. effect span        | 15 PPM/°C        |
| Temp. effect zero        | 26 PPM/°C        |
| Operating Temp. range    | - 20°C ~ + 60°C  |
| Compensated Temp. range  | - 10°C ~ + 40°C  |
| Input resistance         | 770 ± 15Ω        |
| Output resistance        | 700 ± 5Ω         |
| Safe overload            | 150% F.S.        |
| Ultimate overload        | 300% F.S.        |
| Excitation voltage       | 10VDC/AC         |
| Max. Excitation voltage  | 30VDC/AC         |
| Insulation resistance    | ≥ 2000MΩ         |
| Environmental protection | IP67             |
| Material                 | Alloy tool steel |
| Cable length             | 50FT             |



| Capacity<br>lb | DIMENSION |      |       |       |      |      |      |      |      |      |      |
|----------------|-----------|------|-------|-------|------|------|------|------|------|------|------|
|                | Size inch |      |       |       |      |      |      |      |      |      |      |
|                | A         | B    | C     | D     | E    | F    | G    | H    | I    | J    | R    |
| 10K-25K        | 7.75      | 1.38 | 5.00  | 6.50  | 1.70 | 1.94 | 0.90 | 0.70 | 1.71 | 1.87 | 0.75 |
| 40K            | 10.25     | 1.93 | 6.39  | 8.50  | 2.12 | 2.44 | 1.12 | 0.81 | 1.97 | 2.34 | 1.00 |
| 50K-75K        | 10.25     | 1.93 | 6.39  | 8.50  | 2.64 | 2.94 | 1.37 | 1.06 | 2.43 | 2.84 | 1.00 |
| 100K-125K      | 15.24     | 3.15 | 8.94  | 12.75 | 3.43 | 3.86 | 1.80 | 1.62 | 2.91 | 3.73 | 1.50 |
| 200K           | 19.25     | 4.00 | 11.25 | 15.24 | 5.12 | 5.80 | 1.80 | 1.62 | 3.80 | 5.12 | 2.00 |



Virtual Measurements & Control Inc

Virtual Measurements & Control Inc

3196 Coffey Lane, Suite 604, Santa Rosa, CA95403

Tel: (707) 573 3111 Fax: (707) 573 3113

Virtual Measurements & Control (Asia) Pte Ltd

24 Hillview Terrace, Singapore 669 235

Tel: (65) 6762 5522 Fax: (65) 6763 6656

Dealer: