



Shear Beam Load Cell

VLC-A100 / VLC-A100S

APPLICATIONS

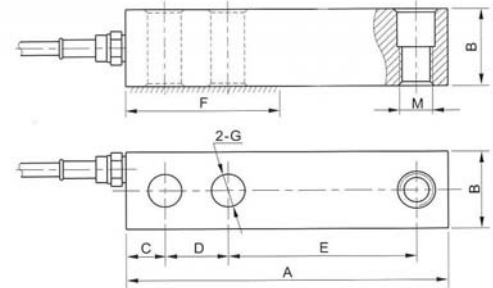
- Tank Weighing
- Hopper weighing
- Platform scales

WIRING

RED	Input (+)
BLACK	Input (-)
GREEN	Output (+)
WHITE	Output (-)

CAPACITY

250, 500lb

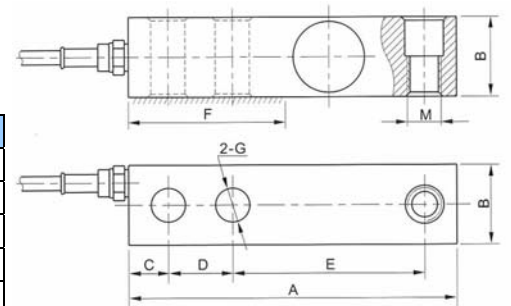


SPECIFICATIONS

Rated Output	2mV/V ± 0.2%
Non-Linearity	0.03% F.S.
Hysteresis	0.03% F.S. (VLC-A100) 0.05% F.S. (VLC-A100S)
Non-repeatability	0.02% F.S.
Creep (in 1 hr)	0.03% F.S.
Zero Balance	± 1%
Temp. effect span	15 PPM/°C
Temp. effect zero	26 PPM/°C
Operating Temp. range	- 20°C ~ + 60°C
Compensated Temp. range	- 10°C ~ + 40°C
Input resistance	385 ± 15Ω
Output resistance	350 ± 3Ω
Safe overload	150% F.S.
Ultimate overload	300% F.S.
Excitation voltage	10VDC/AC
Max. Excitation voltage	15VDC/AC
Insulation resistance	≥ 2000MΩ
Environmental protection	IP67
Material	Alloy tool steel (VLC-A100) Stainless steel (VLC-A100S)
Cable length	20FT

CAPACITY

1K, 2K, 2.5K, 4K, 5Kse, 5K, 10K, 15K, 20K



DIMENSION

Capacity	Size inch							Thread inch
	A	B	C	D	E	F	G	M
250 - 5Kse	5.12	1.26	0.62	1.00	3.00	2.20	0.53	½ - 20UNF-2B
5K -10K	6.75	1.50	0.75	1.50	3.75	3.00	0.79	¾ - 16 UNF-2B
15K - 20K	8.76	2.00	1.00	2.00	4.87	4.02	1.06	1 - 14 UNF-2B



Virtual Measurements & Control Inc

Virtual Measurements & Control Inc

3196 Coffey Lane, Suite 604, Santa Rosa, CA95403

Tel: (707) 573 3111 Fax: (707) 573 3113

Virtual Measurements & Control (Asia) Pte Ltd

24 Hillview Terrace, Singapore 669 235

Tel: (65) 6762 5522 Fax: (65) 6763 6656

Dealer: